

Aquaporins as targets for stress tolerance in plants: genomic complexity and perspectives

Wonkeun John PARK^{1*}, Benjamin Todd CAMPBELL²

¹Pee Dee Research and Education Center, Clemson University, Florence, SC, USA

²USDA-ARS, Coastal Plains Soil, Water, and Plant Research Center, Florence, SC, USA

Received: 15.05.2015

Accepted/Published Online: 07.10.2015

Printed: 21.12.2015

Abstract: As a multigene family, plant aquaporins function not only in water transport but also in transport of small elements that are important for vegetative and reproductive growth of plants. Increasing evidence exhibits the relevance of aquaporins to tolerance against abiotic and biotic stresses such as drought, nutrient deficiency, and herbivore attack. With the accumulation of crop genome sequencing, it is suggested that several aquaporin genes are conserved in subchromosomal locations as tandem duplicated members. In this review, we will discuss the compelling nature of aquaporins as multifunctional transport channels that are often encoded in clustered regions of genomes and relevant to stress resistance in plants.

Key words: Aquaporin, boron, drought, silicon, stress, tandem duplication, water

1. Introduction

Since the discovery of aquaporins as water channel proteins in human erythrocytes and renal cells, a dramatic diversity of aquaporin isoforms has been subsequently described across living organisms from prokaryotes to eukaryotes including unicellular algae, fungi, and higher plants (Preston et al., 1992; Maurel et al., 1993; Agre et al., 1998; Hohmann et al., 2000). Current knowledge of aquaporin multichannel proteins in plants indicates that they are generally classified in five distinct subfamilies by sequence homology and subcellular localization in association with versatile cellular transport functions (Kruse et al., 2006; Maurel et al., 2008; Abascal et al., 2014). These evolutionarily and phylogenically distinct subfamilies are the plasma membrane intrinsic proteins (PIPs), the tonoplast intrinsic proteins (TIPs), the small basic intrinsic proteins (SIPs), the nodulin26-like intrinsic proteins (NIPs), and the uncharacterized X intrinsic proteins (XIPs) (Johanson et al., 2001; Danielson and Johanson, 2008) (Figure). Unique from animals, the number of aquaporin genes is substantially expanded in higher plants and reaches more than 50 genes in the case of crop species that possess highly complex genomes (Table 1).

In actively growing plant cells, water and nutrients need to be constantly supplied for proper cell expansion, division, and reproduction (Chrispeels and Maurel,

1994). Although initially triggered by transpiration through stomata in leaves, water uptake and transport are multifaceted processes in which water can move apoplastically, simplistically, and transcellularly (Chaumont and Tyerman, 2014). Consequently, orchestrated management in highly compartmentalized plant cellular organization necessitates the presence of the abundant aquaporin multigene family in plants in comparison to metazoans in which small numbers of aquaporins are present (Maurel et al., 2015).

Multiple copies of aquaporin isoforms are localized in cellular and subcellular membranes across plant bodies and play diverse roles in water transport (Wudick et al., 2009). In *Arabidopsis* (*Arabidopsis thaliana* L.), although aquaporin genes are highly redundant, single gene knockout mutant studies demonstrate that a single aquaporin gene has its own phenotypic consequence (Peret et al., 2012). Peret et al. (2012) have shown that lateral root emergence is temporally and spatially regulated by auxin, which negatively regulates accumulation of aquaporin *AtPIP2;1* thereby altering water flow to the lateral root primordia. Moreover, phylogenetic analysis and functional study of various aquaporin members reveal that neofunctionalization of duplicated aquaporin genes allows more diverse roles of aquaporins in uptake and transport of other substrates in addition to water molecules (Kruse et al., 2006) (Figure).

* Correspondence: wonkeup@clemson.edu

Table 1. Number of aquaporins in genomes of different species.

Species	Genome size	Ploidy of genome	Number of aquaporin	Reference	Number of tandem array	Tandem arrayed genes
<i>Homo sapiens</i>	2.5 Gb	2x	12	(Kruse et al., 2006)	0	
<i>Arabidopsis thaliana</i>	120 Mb	2x	35	(Quigley et al., 2002)	2	2 PIP2s, 2 NIP4s
<i>Physcomitrella patens</i>	473 Mb	2x	23	(Danielson and Johanson, 2008)	0	0
<i>Gossypium raimondi</i>	885 Mb	2x	59	(Paterson et al., 2012)	2	3 PIP1s, 2 XIPs
<i>Gossypium arboreum</i>	1.75 Gb	2x	52	(Li et al., 2014)	2	3 PIP1s, 2 XIPs
<i>Gossypium hirsutum</i>	2.2 – 2.4 Gb	4x	>71	(Park et al., 2010)	NA	NA
<i>Populus trichocarpa</i>	423 Mb	2x	55	(Lopez et al., 2012)	1	6 XIPs
<i>Oryza sativa</i>	389 Mb	2x	34	(Nguyen et al., 2013)	3	2 TIP4s, 4 PIP2s, 2 NIP3s
<i>Zea mays</i>	2.3 Gb	2x	44	(Schnable et al., 2009)	NA	NA
<i>Phaseolus vulgaris</i>	521 Mb	2x	41	(Ariana, 2015)	4	2 NIP1, 2PIP2, 2 NIP1,2 XIPs

NA: Not available

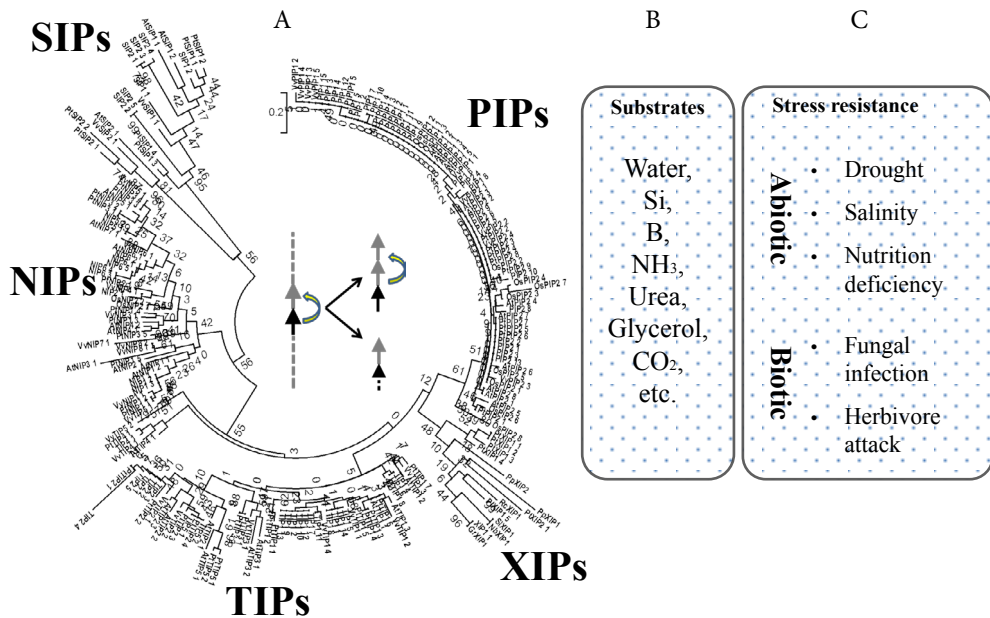


Figure. Aquaporins, a multigene family consisting of 5 main subfamilies (PIPs, TIPs, NIPs, SIPs, and XIPs) are diversified by duplication or tandem repeats as shown by arrows (A), known to facilitate transport of water and other essential/beneficial molecules such as Si, B, and glycerol (B), and related to resistance to abiotic and biotic stresses (C).

Land plants have adapted by altering their genomic structure to facilitate better strategies for survival in changing environments. In higher eukaryotes including many crop species, gene duplication has contributed

largely to genomic novelty by a combination of functional divergence of duplicated gene pairs followed by selective retention or silencing (Flagel and Wendel, 2009; Fedoroff, 2012). In a number of plant species, it has been shown

that genes in orthologous groups expanded via tandem duplication are more associated with biotic and abiotic stress responses (Hanada et al., 2008).

In this review, we describe the multigene aquaporin family focusing on two main subjects: 1) aquaporin gene family members localized in genomes by tandem duplication, and 2) aquaporin channel proteins playing diverse roles in plants in conjunction with stress resistance. It is within this context that we will discuss aquaporins as targets for stress tolerance.

2. Genomic distribution of aquaporin genes in plants

2.1. Clustered aquaporins

Plant genomes have diversified structurally and functionally over time, leading to genetic and trait diversity largely due to the alteration of gene expression contributed by modification of regulatory mechanisms. Gene regulatory mechanisms include factors acting as cis- or trans-, elements working along with epigenetic regulation, and insertion/deletion of inter/intragenic regions (Fedoroff, 2012). Comparative crop genomics studies dramatically increased our knowledge of the genomic structure of the plant lineage with the help of recent advances in massively parallel nucleic acid sequencing approaches. A primary outcome is that many plant genes or gene families are highly conserved across the plant kingdom and experienced gene duplication over time (Flagel and Wendel, 2009).

Interestingly, from the available chromosomal maps of aquaporin genes in plant genomes, two to five regions in the genome harbor clustered aquaporin genes (Table 1). Aquaporins from these clustered sequences are highly similar and may function redundantly. In *Arabidopsis*, 35 aquaporin genes are distributed across the genome and two sets of duplicated aquaporin genes are clustered in a tandem arrayed manner (Johanson et al., 2001; Quigley et al., 2002). Considering the origination of tandem duplicated genes, expression of the tandem arrayed orthologues tends to be orchestrated in a collinear fashion because of the shared cis-acting elements (Schmid et al., 2005). Although there is frequent overlap in expression patterns, there are still considerable occasions in which tandem duplicated genes do not act alike. One of the tandem duplicated genes, *AtPIP2;2*, is shown to function nonredundantly as determined by transfer DNA (T-DNA) mutants in which a 30% reduction in hydraulic conductivity occurs in root cortex cells despite the presence of the highly homologous *AtPIP2;3*. These two genes are physically arrayed by head to head gene arrangement and therefore share the cis-regulatory regions (Javot et al., 2003). In rice (*Oryza sativa* L.), three independent chromosomal locations show tandem repeats in which 2 *TIP4*s in chromosome 1, 4 *PIP2*s in chromosome 7, and 2 *NIP3*s in chromosome 8 are highly similar in sequence and grouped into a single

subfamily of aquaporins in each clustered locus (Sakurai et al., 2005; Nguyen et al., 2013). The fact that 25% of aquaporin genes have been generated in the rice genome by tandem repeats coincides with the finding that 30% of all rice genes are localized with tandem arrays (Jiang et al., 2013).

2.2. Gene expression

In *Arabidopsis* and rice, gene ontology analysis indicates that tandem arrayed genes are enriched in the coding sequences categorized in proteins such as membrane localized proteins and stress-related proteins. These features are strikingly conserved between two plant species (Rizzon et al., 2006), although receptor-like protein coding genes constitute the majority of this group (Meyers et al., 2005). In the case of tandem arrayed aquaporin members in rice, expression analysis of four *OsPIP2* copies in chromosome 7 reveals partial overlap of expression patterns in tissues examined, but these genes are expressed with considerably different levels when examined under different stress conditions (Nguyen et al., 2013). In another example of tandem arrayed genes, *OsTIP4;2* and *OsTIP4;3*, show sequence similarity in general, but also exhibit unique patterns of tissue specific expression different from each other (Nguyen et al., 2013). In common bean (*Phaseolus vulgaris* L.), four pairs of aquaporin genes are clustered among 41 aquaporin members. *PvPIP2;1* and *PvPIP2;2* show 98% sequence homology and similar expression patterns among tissues tested, while expression patterns and gene structure of the other three pairs are not shared between counterparts (Ariana, 2015). A possible modification of gene expression at the genomic level has been suggested because of two silencing events detected in two out of four clustered aquaporins (Ariana, 2015).

2.3. XIP subfamily

The subfamily XIP was initially identified in the moss *Physcomitrella patens*, a model organism of the basal lineage of land plants in which 23 aquaporins were found including two members of the XIP subfamily (Danielson and Johanson, 2008). This novel aquaporin subfamily has less similarity with previously identified aquaporin members, resulting in delay of the identification of the XIP subfamily. While the XIP subfamily is present from unicellular algae to higher plants, it has been noted that XIPs are not found in the family *Brassica* including *Arabidopsis* and in all monocotyledon genomes sequenced so far (Danielson and Johanson, 2008). Functional analysis of XIP members from various plants among the family *Solanaceae* have shown their roles as membrane channels for different small, nonpolar molecules such as glycerol, urea, and boric acid, but not for water molecules (Bienert et al., 2011). Interestingly, XIP genes often locate in plants genomes in a tandem arrayed manner, implicating possible duplicated origins followed by functional diversification (Table 1).

Among 55 poplar (*Populus trichocarpa* L.) aquaporins, six *XIPs* (including one pseudogene) are clustered on chromosome 9 and are expressed nonredundantly (Gupta and Sankaramakrishnan, 2009; Lopez et al., 2012; Cohen et al., 2013). Interestingly, these *XIP* members harbor alternative solute specificities, demonstrating unique but overlapping features of this clustered subfamily members under stressed growth environment (Lopez et al., 2012).

2.4. Polyploidization

Clustered in an aquaporin-rich region, it would be interesting to explore allelic expression variation of these highly homologous genes not only in a single genotype but also across different genotypes of the same species. In maize (*Zea mays* L.), all of eight functionally unrelated genes in the *Bz1-Sh1* gene rich region show 1.3- to 36-fold of strikingly biased allelic expression variation in at least one of the tissues examined (Dooner and Martinez-Ferez, 1997; Hawkins et al., 2014). Distribution of aquaporin genes in polyploid plant genomes such as upland cotton (*Gossypium hirsutum* L.) has proven to be extremely complicated (Park et al., 2010). Upland cotton is known to have evolved as a result of the hybridization between two ancestral species tracing back to diploid A- and D- genome progenitors (Wendel and Cronn, 2003). Evolutionary genomic events present within *Gossypium* species reveal a dynamic fluctuation in gene copy number ascribed to gene duplication phenomena followed by pseudogenization and deletion (Small and Wendel, 2000). *Gossypium raimondii* (D₅ genome) has the smallest genome size among *Gossypium* species and thus was the first *Gossypium* species sequenced at the whole genome level (Paterson et al., 2012). In this genome, two clustered chromosomal loci of aquaporin genes are localized in a tandemly duplicated manner among 59 aquaporins (Table 1). Recently, another ancestral A₂ cultivated diploid, *Gossypium arboreum*, was fully sequenced (Li et al., 2014), and preliminary physical localization of A-genome aquaporin genes revealed similar clustered patterns in both diploid genomes (<http://cgp.genomics.org.cn/page/species/index.jsp>). It will be interesting to determine the genomic organization of clustered aquaporin genes in tetraploid cotton and how tandem duplicated genes are functionally diverged.

3. Stress

3.1. Complexity in aquaporin study

Plants are often exposed to challenging environments such as drought, salinity, and cold shock in which circumstances require balanced water uptake and transport against adverse osmotic potential for survival (Luu and Maurel, 2005). Water deficit stress is one of the major challenging abiotic stresses that prompts complicated physiological, cellular, and genetic changes such as stomatal closure, transcriptomic, epigenetic, and

metabolic modifications. Consequently, these changes result in decreased photosynthetic activity, leading to decreased crop production (Morison et al., 2008; Ahuja et al., 2010). Therefore, it is fundamental to understand underlying mechanisms by which plants control the water balance, water transport, and responses to water-deficit stress and recovery after drought stress. Despite the idea that aquaporins can play roles in plant response to water-deficit stress based upon their basal water-transporting activity, related studies have often been unclear. This lack of clarity results from the complex expression patterns of aquaporins, high sequence similarity, and limitation of tools to measure accurate movement across transmembrane aquaporin channels (Kaldenhoff et al., 2008).

3.2. Gene suppression study

In addition to aquaporin gene expression analyses that have shown the relevance of aquaporins to the water deficit stress, there are other sophisticated approaches that have used forward and reverse genetics and gene knockout mutant systems to support the idea linking aquaporin functions and water stress responsiveness in plants (Table 2). In the moss *P. patens*, two *PIP2* knockout mutants exhibited a severe stress phenotype when grown under drought conditions and protoplast plasma membranes of these mutants have reduced water conductivity. This demonstrates that *PpPIP2;1* and *PpPIP2;2* take part in transporting water molecules and in managing plant water balance under stress conditions (Lienard et al., 2008). When a tobacco (*Nicotiana tabacum* L.) aquaporin, *NtAQPI*, was silenced to downregulate *NtAQPI* transcripts, this antisense construct-expressing plant exhibited reduced root hydraulic conductivity and lowered resistance to water deficit stress in comparison to the control plants. This illustrated the functional importance of *NtAQPI* in the water balance under a water stressed growth environment (Siefritz et al., 2002). T-DNA knockout mutations of the Arabidopsis *PIP2;2* gene showed reduced hydraulic conductivity in root cortex cells in spite of the presence of the neighboring, highly homologous *PIP2;3* gene (Javot et al., 2003). It is noteworthy to point out the suggested relevance of aquaporins to CO₂ transport, because the presence of a functional CO₂ transporter in drought conditions may offer alternate routes of photosynthetic activity (Kaldenhoff et al., 1998; Boudichevskaia et al., 2015). In accordance with this idea, a differential CO₂ concentration was measured using a micro pH electrode to support the possible role of aquaporins in CO₂ transport across biological membranes with and without *AtPIP1;2* (Uehlein et al., 2012).

3.3. Drought stress

From a long-term germplasm screening program under field drought conditions, a slow-wilting soybean genotype,

PI416937, was identified. This phenotype was attributed to the low hydraulic conductance in leaves and might be caused by a lack of specific aquaporins that displayed sensitivity to silver (Ag), an inhibitor of aquaporin protein in leaves of PI416937 (Sinclair et al., 2008; Sadok and Sinclair, 2010). Two poplar clones differing in response to drought stress were chosen to analyze aquaporin gene expression under drought conditions. In this study six *PIP* genes including *PIP1;3* showed increased expression in response to water deficit conditions only in leaves of *P. simonii* × *balsamifera* in which rapid reduction of stomatal conductance occurred, resulting in growth retardation under drought conditions (Almeida-Rodriguez et al., 2010). In upland cotton, two highly homologous aquaporin-coding sequences belonging to a *PIP1* subfamily were identified to have spatial and contrasting expression patterns in root and leaf tissues when field-grown cotton plants were compared in two different water conditions (Park et al., 2012). This implicated the involvement of duplicated aquaporin genes with functional diversification in response to drought.

3.4. Boron (B)

In addition to their function as essential water transporters, the major intrinsic protein aquaporin family members are also considered ancient and multifaceted channel proteins for metalloids (Ma et al., 2006; Bienert et al., 2008). As an essential element in plant growth and reproduction, boron (B) has to be supplied to plants from soil for proper cell wall biosynthesis (Goldbach and Wimmer, 2007). Deficiency of B in arable areas has been problematic across crop species worldwide (Takano et al., 2008). In *Arabidopsis*, an aquaporin gene responsible for B uptake was identified. T-DNA insertion mutations in the *NIP5;1* gene displayed decreased ability of mutant plants to take up B in root tissue and a striking growth retardation occurred in the case of low B supply (Table 2) (Takano et al., 2006). Additionally, for the purpose of acclimation of plants exposed to high B supply, it was shown that there was a feedback mechanism by which *AtNIP5;1* was negatively regulated through the regulation of the 5'-untranslated region (5'-UTR) of the gene (Tanaka et al., 2011). Recently, it was shown by positional cloning of the *tasselless-1 (tls1)* mutation in maize that a B transporter *ZmNIP3;1* (an orthologue of *Arabidopsis* boron transporter *AtNIP5;1*) was responsible for the phenotype caused by B deficiency in the mutant maize plant. This boron transporter was essential for normal vegetative and reproductive growth in maize (Durbak et al., 2014).

3.5. Silicon (Si)

Similar to B, Si is ubiquitous in soil and is absorbed into plant root as a form of monosilicic acid, $\text{Si}(\text{OH})_4$. After absorption, Si is transported to aerial parts through the transpiration stream, and deposited in plant cell walls as

a form of amorphous silica, $\text{SiO}_2 \cdot n\text{H}_2\text{O}$. Alleviation of abiotic and biotic stress mediated by Si is a well-known phenomenon in many plants (Ma and Yamaji, 2008; Van Bockhaven et al., 2013). Specifically, the prophylactic effects of Si on disease were noted in rice, which is known as a strong Si accumulator (Rodrigues et al., 2003; Ma and Yamaji, 2008). The influx Si transporter *Lsi1* (for Low silicon1) is the first plant Si transporter identified by quantitative trait loci (QTL) mapping using a rice mutant defective in Si uptake (Ma et al., 2006). Belonging to the aquaporin subfamily NIP2, *Lsi1* is widely conserved in the plant kingdom. In addition, a second aquaporin type Si transporter has been identified in rice where NIP2;2 (*Lsi6*) facilitates Si transport by unloading silicic acid from the xylem to leaf tissues (Yamaji et al., 2008). In fescue grasses (*Festuca* spp.) the microstructure and shapes of phytoliths have shown dramatic effects in preventing damage from herbivore attack, indicating that not only the Si accumulation itself but also the morphological structure of accumulated Si on leaf surface provide cues of more effective defense against herbivore attacks (Hartley et al., 2015).

3.6. Urea

Lastly, in *Arabidopsis*, *AtTIP1;3* and *AtTIP5;1* showed strong and limited expression in mature pollens and capacity to transport water and urea in a heterologous system (Soto et al., 2008). Each single mutation in these two genes generated a phenotype with a 30% reduction in pollen tube elongation and an 80% decrease in mitochondrial volume in pollen tubes when germinated in vitro in the absence of exogenous nitrogen sources. Because *AtTIP5;1* protein was subcellularly localized in mitochondria, it was suggested that *AtTIP5;1* might have roles in nitrogen remobilization across cellular organelles (Table 2) (Soto et al., 2010).

4. Prospects

Redundancy and novelty are equally important in the history of crop genome diversification. There are increasing circumstances that support a role of aquaporins as selective transporters of different substrates. For example, aquaporins can facilitate membrane transport of gaseous molecules such as carbon dioxide, ammonia, and nitroxide (Hwang et al., 2010; Herrera and Garvin, 2011; Kaldenhoff, 2012). As cross membrane transporting components for water and different nutrients, aquaporins also function across kingdoms, in symbiosis between plants and microbes (Aroca et al., 2007; Bonfante and Genre, 2008; Aroca et al., 2009). In this relationship, colonized microorganisms such as ectomycorrhizas and arbuscular mycorrhizas present in the plant root rhizosphere are beneficial to plant nutrition especially in stressed conditions such as water deficit and nutrient

Table 2. A list of genetic studies of aquaporins in stress response.

Gene	Plant	Function	Stress	Reference	Mutation
PpPIP2;1/PpPIP2;2	<i>P. patens</i>	Water transport	Water-deficit	(Lienard et al., 2008)	Antisense silencing
AtPIP1a/b	Arabidopsis	Water transport	Hypotonic	(Kaldenhoff et al., 1998)	Antisense silencing
AtPIP2;2	Arabidopsis	Water transport	Hypotonic	(Javot et al., 2003)	T-DNA
AtNIP3-1	Arabidopsis	As root-shoot translocation	As tolerance	(Xu et al., 2015)	T-DNA
AtTIP1;3/AtTIP5;1	Arabidopsis	N remobilization	N deficiency	(Soto et al., 2010)	T-DNA
NtAQP1	Tobacco	Water transport	Drought	(Siefritz et al., 2002)	Antisense silencing
AtPIP1;2	Arabidopsis	CO ₂ transport	Low CO ₂	(Uehlein et al., 2012; Boudichevskaia et al., 2015)	T-DNA
PIP1	Poplar	Water/CO ₂	Drought	(Secchi and Zwieniecki, 2013)	Antisense silencing
Lsi1	Rice	Silicon uptake	Leaf blight	(Ma et al., 2006)	Point mutation
NIP3;1 (tls1)	Maize	Boron uptake	Boron deficiency	(Durbak et al., 2014)	Point mutation
NIP5;1	Arabidopsis	Boron uptake	Boron deficiency	(Takano et al., 2006)	T-DNA

deficiency. Aquaporins present on both sides of symbiotic relationships are considered functionally important. Further exploration of this relationship is a very interesting topic and may assist with strategies important in coping with crop production in adverse conditions.

In conclusion, this review described that aquaporin genes appeared as tandem duplication in genomes of many plants and crop species and those tandem localized aquaporins were often diverged in gene expression patterns and possible functions. Multifaceted functions of aquaporins in transporting water and other small molecules were shown to be essential mechanisms that play important roles in proper growth, reproduction, and

resistance to abiotic and biotic stresses. The aquaporin studies mentioned in this review and on-going research on this compelling topic will lead to a new generation in biotic and abiotic stress resistance in crop production.

Acknowledgments

We thank Dr Bruce Martin of Clemson University for critically reviewing this manuscript and for his contribution to resources. Research conducted by Wonkeun John Park and Benjamin Todd Campbell was accomplished with financial support from the project No. 6657-21000-007-00D of the US Department of Agriculture and Cotton Incorporated projects 11-865, 12-208, 13-475, and 14-361.

References

- Abascal F, Irisarri I, Zardoya R (2014). Diversity and evolution of membrane intrinsic proteins. *Biochim Biophys Acta* 1840: 1468–1481.
- Agre P, Bonhivers M, Borgnia MJ (1998). The aquaporins, blueprints for cellular plumbing systems. *J Biol Chem* 273: 14659–14662.
- Ahuja I, de Vos RC, Bones AM, Hall RD (2010). Plant molecular stress responses face climate change. *Trends Plant Sci* 15: 664–674.
- Almeida-Rodriguez AM, Cooke JE, Yeh F, Zwiazek JJ (2010). Functional characterization of drought-responsive aquaporins in *Populus balsamifera* and *Populus simonii* × *balsamifera* clones with different drought resistance strategies. *Physiol Plantarum* 140: 321–333.
- Ariana A, Gepts P (2015). Genome-wide identification and characterization of aquaporin gene family in common bean (*Phaseolus vulgaris* L.). *Mol Genet Genomics* 290: 1771–1785.
- Aroca R, Bago A, Sutka M, Paz JA, Cano C, Amodeo G, Ruiz-Lozano JM (2009). Expression analysis of the first arbuscular mycorrhizal fungi aquaporin described reveals concerted gene expression between salt-stressed and nonstressed mycelium. *Mol Plant Microbe In* 22: 1169–1178.
- Aroca R, Porcel R, Ruiz-Lozano JM (2007). How does arbuscular mycorrhizal symbiosis regulate root hydraulic properties and plasma membrane aquaporins in *Phaseolus vulgaris* under drought, cold or salinity stresses? *New Phytol* 173: 808–816.
- Bienert GP, Bienert MD, Jahn TP, Boutry M, Chaumont F (2011). Solanaceae XIPs are plasma membrane aquaporins that facilitate the transport of many uncharged substrates. *Plant J* 66: 306–317.
- Bienert GP, Schussler MD, Jahn TP (2008). Metalloids: essential, beneficial or toxic? Major intrinsic proteins sort it out. *Trends Biochem Sci* 33: 20–26.

- Bonfante P, Genre A (2008). Plants and arbuscular mycorrhizal fungi: an evolutionary-developmental perspective. *Trends Plant Sci* 13: 492–498.
- Boudichevskaia A, Heckwolf M, Kaldenhoff R (2015). T-DNA insertion in aquaporin gene AtPIP1;2 generates transcription profiles reminiscent of a low CO₂ response. *Plant Cell Environ* DOI: 10.1111/pce.12547.
- Chaumont F, Tyerman SD (2014). Aquaporins: highly regulated channels controlling plant water relations. *Plant Physiol* 164: 1600–1618.
- Chrispeels MJ, Maurel C (1994). Aquaporins: the molecular basis of facilitated water movement through living plant cells? *Plant Physiol* 105: 9–13.
- Cohen D, Bogeat-Triboulot MB, Vialet-Chabrand S, Merret R, Courty PE, Moretti S, Bizet F, Guillot A, Hummel I (2013). Developmental and environmental regulation of aquaporin gene expression across *Populus* species: divergence or redundancy? *PLoS One* 8(2): e55506. doi:10.1371/journal.pone.0055506.
- Danielson JA, Johanson U (2008). Unexpected complexity of the aquaporin gene family in the moss *Physcomitrella patens*. *BMC Plant Biol* 8: 45.
- Dooner HK, Martinez-Ferez IM (1997). Recombination occurs uniformly within the bronze gene, a meiotic recombination hotspot in the maize genome. *Plant Cell* 9: 1633–1646.
- Durbak AR, Phillips KA, Pike S, O'Neill MA, Mares J, Gallavotti A, Malcomber ST, Gassmann W, McSteen P (2014). Transport of boron by the tassel-less1 aquaporin is critical for vegetative and reproductive development in maize. *Plant Cell* 26: 2978–2995.
- Fedoroff NV (2012). Presidential address. Transposable elements, epigenetics, and genome evolution. *Science* 338: 758–767.
- Flagel LE, Wendel JF (2009). Gene duplication and evolutionary novelty in plants. *New Phytol* 183: 557–564.
- Goldbach, HE, Wimmer, MA (2007). Boron in plants and animals: Is there a role beyond cell-wall structure? *J Plant Sci Soil Nutr* 170: 39–48.
- Gupta AB, Sankararamkrishnan R (2009). Genome-wide analysis of major intrinsic proteins in the tree plant *Populus trichocarpa*: characterization of XIP subfamily of aquaporins from evolutionary perspective. *BMC Plant Biol* 9: 134.
- Hanada K, Zou C, Lehti-Shiu MD, Shinozaki K, Shiu SH (2008). Importance of lineage-specific expansion of plant tandem duplicates in the adaptive response to environmental stimuli. *Plant Physiol* 148: 993–1003.
- Hartley SE, Fitt RN, McLarnon EL, Wade RN (2015). Defending the leaf surface: intra- and inter-specific differences in silicon deposition in grasses in response to damage and silicon supply. *Front Plant Sci* 6: 35.
- Hawkins JS, Delgado V, Feng L, Carlisle M, Dooner HK, Bennetzen JL (2014). Variation in allelic expression associated with a recombination hotspot in *Zea mays*. *Plant J* 79: 375–384.
- Herrera M, Garvin JL (2011). Aquaporins as gas channels. *Pflug Arch Eur J Phy* 462: 623–630.
- Hohmann S, Bill RM, Kayingo G, Prior BA (2000). Microbial MIP channels. *Trends Microbiol* 8: 33–38.
- Hwang JH, Ellingson SR, Roberts DM (2010). Ammonia permeability of the soybean nodulin 26 channel. *Febs Lett* 584: 4339–4343.
- Javot H, Lauvergeat V, Santoni V, Martin-Laurent F, Guclu J, Vinh J, Heyes J, Franck KI, Schaffner AR, Bouchez D et al. (2003). Role of a single aquaporin isoform in root water uptake. *Plant Cell* 15: 509–522.
- Jiang SY, Gonzalez JM, Ramachandran S (2013). Comparative genomic and transcriptomic analysis of tandemly and segmentally duplicated genes in rice. *PLoS One* 8: e63551.
- Johanson U, Karlsson M, Johansson I, Gustavsson S, Sjovald S, Fraysse L, Weig AR, Kjellbom P (2001). The complete set of genes encoding major intrinsic proteins in *Arabidopsis* provides a framework for a new nomenclature for major intrinsic proteins in plants. *Plant Physiol* 126: 1358–1369.
- Kaldenhoff R (2012). Mechanisms underlying CO₂ diffusion in leaves. *Curr Opin Plant Biol* 15: 276–281.
- Kaldenhoff R, Grote K, Zhu JJ, Zimmermann U (1998). Significance of plasmalemma aquaporins for water-transport in *Arabidopsis thaliana*. *Plant J* 14: 121–128.
- Kaldenhoff R, Ribas-Carbo M, Sans JF, Lovisolo C, Heckwolf M, Uehlein N (2008). Aquaporins and plant water balance. *Plant Cell Environ* 31: 658–666.
- Kruse E, Uehlein N, Kaldenhoff R (2006). The aquaporins. *Genome Biol* 7: 206.
- Li F, Fan G, Wang K, Sun F, Yuan Y, Song G, Li Q, Ma Z, Lu C, Zou C et al. (2014). Genome sequence of the cultivated cotton *Gossypium arboreum*. *Nat Genet* 46: 567–572.
- Lienard D, Durambur G, Kiefer-Meyer MC, Nogue F, Menu-Bouaouiche L, Charlot F, Gomord V, Lassalles JP (2008). Water transport by aquaporins in the extant plant *Physcomitrella patens*. *Plant Physiol* 146: 1207–1218.
- Lopez D, Bronner G, Brunel N, Auguin D, Bourgerie S, Brignolas F, Carpin S, Tournaire-Roux C, Maurel C, Fumanal B et al. (2012). Insights into *Populus* XIP aquaporins: evolutionary expansion, protein functionality, and environmental regulation. *J Exp Bot* 63: 2217–2230.
- Luu DT, Maurel C (2005). Aquaporins in a challenging environment: molecular gears for adjusting plant water status. *Plant Cell Environ* 28: 85–96.
- Ma JF, Tamai K, Yamaji N, Mitani N, Konishi S, Katsuhara M, Ishiguro M, Murata Y, Yano M (2006). A silicon transporter in rice. *Nature* 440: 688–691.
- Ma JF, Yamaji N (2008). Functions and transport of silicon in plants. *Cell Mol Life Sci* 65: 3049–3057.
- Maurel C, Boursiac Y, Luu DT, Santoni V, Shahzad Z Verdoucq L (2015). Aquaporins in plants. *Physiol Rev* 95: 1321–1358.
- Maurel C, Reizer J, Schroeder JI, Chrispeels MJ (1993). The vacuolar membrane protein gamma-TIP creates water specific channels in *Xenopus* oocytes. *EMBO J* 12: 2241–2247.

- Maurel C, Verdoucq L, Luu DT, Santoni V (2008). Plant aquaporins: membrane channels with multiple integrated functions. *Annu Rev Plant Biol* 59: 595–624.
- Meyers BC, Morgante M, Michelmore RW (2002). TIR-X and TIR-NBS proteins: two new families related to disease resistance TIR-NBS-LRR proteins encoded in Arabidopsis and other plant genomes. *Plant J* 32: 77–92.
- Morison JI, Baker NR, Mullineaux PM, Davies WJ (2008). Improving water use in crop production. *Philos T Roy Soc B* 363: 639–658.
- Nguyen MX, Moon S, Jung KH (2013). Genome-wide expression analysis of rice aquaporin genes and development of a functional gene network mediated by aquaporin expression in roots. *Planta* 238: 669–681.
- Opperman CH, Taylor CG, Conkling MA (1994). Root-knot nematode-directed expression of a plant root-specific gene. *Science* 263: 221–223.
- Park W, Scheffler BE, Bauer PJ, Campbell BT (2010). Identification of the family of aquaporin genes and their expression in upland cotton (*Gossypium hirsutum* L.). *BMC Plant Biol* 10: 142.
- Park W, Scheffler BE, Bauer PJ, Campbell BT (2012). Genome-wide identification of differentially expressed genes under water deficit stress in upland cotton (*Gossypium hirsutum* L.). *BMC Plant Biol* 12: 90.
- Paterson AH, Wendel JF, Gundlach H, Guo H, Jenkins J, Jin D, Llewellyn D, Showmaker KC, Shu S et al. (2012). Repeated polyploidization of *Gossypium* genomes and the evolution of spinnable cotton fibres. *Nature* 492: 423–427.
- Peret B, Li GW, Zhao J, Band LR, Voss U, Postaire O, Luu DT, Da Ines O, Casimiro I, Lucas M et al. (2012). Auxin regulates aquaporin function to facilitate lateral root emergence. *Nat Cell Biol* 14: 991–998.
- Preston GM, Carroll TP, Guggino WB, Agre P (1992). Appearance of water channels in *Xenopus* oocytes expressing red cell CHIP28 protein. *Science* 256: 385–387.
- Quigley F, Rosenberg JM, Shachar-Hill Y, Bohnert HJ (2002). From genome to function: the Arabidopsis aquaporins. *Genome Biol* 3: research0001.1–research0001.17.
- Rizzon C, Ponger L, Gaut BS (2006). Striking similarities in the genomic distribution of tandemly arrayed genes in Arabidopsis and rice. *PLoS Comput Biol* 2: e115.
- Rodrigues FA, Vale FX, Datnoff LE, Prabhu AS, Korndorfer GH (2003). Effect of rice growth stages and silicon on sheath blight development. *Phytopathology* 93: 256–261.
- Sadok W, Sinclair TR (2010). Transpiration response of ‘slow-wilting’ and commercial soybean (*Glycine max* (L.) Merr.) genotypes to three aquaporin inhibitors. *J Exp Bot* 61: 821–829.
- Sakurai J, Ishikawa F, Yamaguchi T, Uemura M, Maeshima M (2005). Identification of 33 rice aquaporin genes and analysis of their expression and function. *Plant Cell Physiol* 46: 1568–1577.
- Schmid M, Davison TS, Henz SR, Pape UJ, Demar M, Vingron M, Scholkopf B, Weigel D, Lohmann JU (2005). A gene expression map of *Arabidopsis thaliana* development. *Nat Genet* 37: 501–506.
- Schnable PS, Ware D, Fulton RS, Stein JC, Wei F, Pasternak S, Liang C, Zhang J, Fulton L, Graves TA et al. 2009. The B73 maize genome: complexity, diversity, and dynamics. *Science* 326: 1112–1115.
- Secchi F, Zwieniecki MA (2013). The physiological response of *Populus tremula x alba* leaves to the down-regulation of PIP1 aquaporin gene expression under no water stress. *Front Plant Sci* 4: 507.
- Siefritz F, Tyree MT, Lovisolo C, Schubert A, Kaldenhoff R (2002). PIP1 plasma membrane aquaporins in tobacco: from cellular effects to function in plants. *Plant Cell* 14: 869–876.
- Sinclair TR, Zwieniecki MA, Holbrook NM (2008). Low leaf hydraulic conductance associated with drought tolerance in soybean. *Physiol Plantarum* 132: 446–451.
- Small RL, Wendel JF (2000). Copy number lability and evolutionary dynamics of the Adh gene family in diploid and tetraploid cotton (*Gossypium*). *Genetics* 155: 1913–1926.
- Soto G, Alleva K, Mazzella MA, Amodeo G, Muschietti JP (2008). AtTIP1;3 and AtTIP5;1, the only highly expressed Arabidopsis pollen-specific aquaporins, transport water and urea. *FEBS Lett* 582: 4077–4082.
- Soto G, Fox R, Ayub N, Alleva K, Guaimas F, Erijman EJ, Mazzella A, Amodeo G, Muschietti J (2010). TIP5;1 is an aquaporin specifically targeted to pollen mitochondria and is probably involved in nitrogen remobilization in *Arabidopsis thaliana*. *Plant J* 64: 1038–1047.
- Takano J, Miwa K, Fujiwara T, 2008. Boron transport mechanisms: collaboration of channels and transporters. *Trends Plant Sci* 13: 451–457.
- Takano J, Wada M, Ludewig U, Schaaf G, von Wiren N, Fujiwara T (2006). The Arabidopsis major intrinsic protein NIP5;1 is essential for efficient boron uptake and plant development under boron limitation. *Plant Cell* 18: 1498–1509.
- Tanaka M, Takano J, Chiba Y, Lombardo F, Ogasawara Y, Onouchi H, Naito S, Fujiwara T (2011). Boron-dependent degradation of NIP5;1 mRNA for acclimation to excess boron conditions in Arabidopsis. *Plant Cell* 23: 3547–3559.
- Uehlein N, Sperling H, Heckwolf M, Kaldenhoff R (2012). The Arabidopsis aquaporin PIP1;2 rules cellular CO₂ uptake. *Plant Cell Environ* 35: 1077–1083.
- Van Bockhaven J, De Vleeschauwer D, Hofte M (2013). Towards establishing broad-spectrum disease resistance in plants: silicon leads the way. *J Exp Bot* 64: 1281–1293.
- Wendel JF, Cronn RC (2003). Polyploidy and the evolutionary history of cotton. *Adv Agron* 78: 139–186.
- Wudick MM, Luu DT, Maurel C (2009). A look inside: localization patterns and functions of intracellular plant aquaporins. *New Phytol* 184: 289–302.
- Xu W, Dai W, Yan H, Li S, Shen H, Chen Y, Xu H, Sun Y, He Z, Ma M (2015). Arabidopsis NIP3;1 plays an important role in arsenic uptake and root-to-shoot translocation under arsenite stress conditions. *Mol Plant* 8: 722–733.
- Yamaji N, Mitatni N, Ma JF (2008). A transporter regulating silicon distribution in rice shoots. *Plant Cell* 20: 1381–1389.